

LITHIUM IRON PHOSPHATE BATTERY

ELECTRICAL SPECIFICATIONS

Nominal Voltage	12.8 V
Nominal Capacity	20 Ah
Capacity @ 0.2C	>290 min
Energy	256Wh
Resistance	<50 mΩ
Efficiency	99%
Self Discharge	<3% per Month
Maximum Modules in Series	4

DISCHARGE SPECIFICATIONS

Maximum Continuous Discharge Current	20 A
Peak Discharge Current	40 A
Recommended Low Voltage Disconnect	11 V
PCM Discharge Voltage Cut-Off	10 V
Reconnect Voltage	12 V
Short Circuit Protection	Yes

TEMPERATURE SPECIFICATIONS

Discharge Temperature	-20 to 60 °C
Charge Temperature	0 to 55°C
Storage Temperature	-20 to 60 °C
PCM High Temperature Cut-Off	176 °F (80 °C)

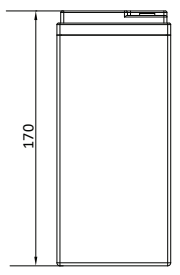
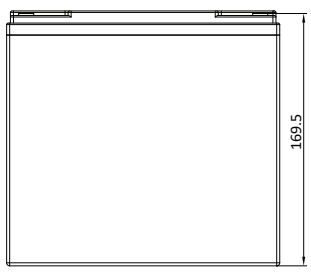
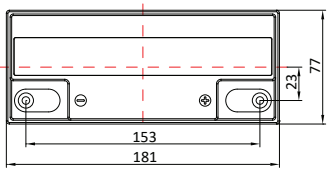
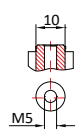
DIMENSIONAL SPECIFICATIONS

MECHANICAL SPECIFICATIONS

Dimensions (L x W x H)	181 x 77 x 170 mm
Weight	3.2 kg
Terminal Type	M5
Case Material	ABS
Enclosure Protection	IP65
Chemistry	LiFePO ₄

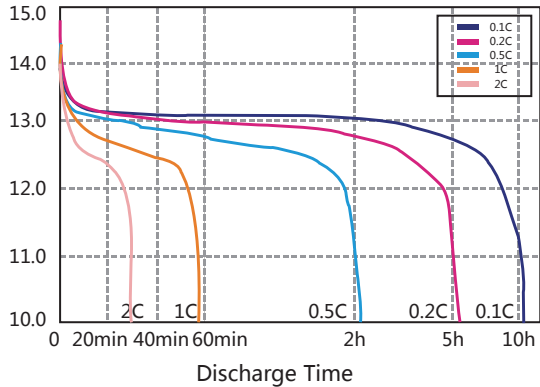
CHARGE SPECIFICATIONS

Recommended Charge Current	10A
Maximum Charge Current	20 A
Recommended Charge Voltage	14.2 V - 14.6 V
Reconnect Voltage	15.2 V

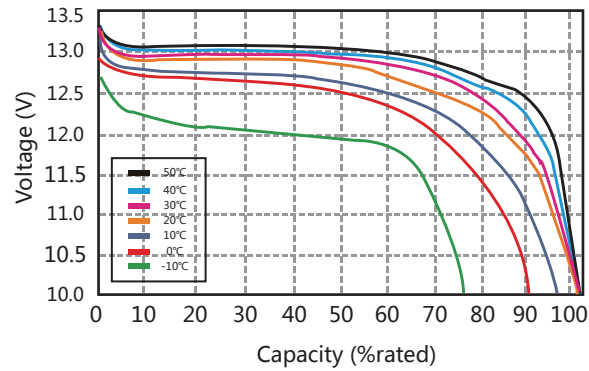


PERFORMANCE CHARACTERISTICS

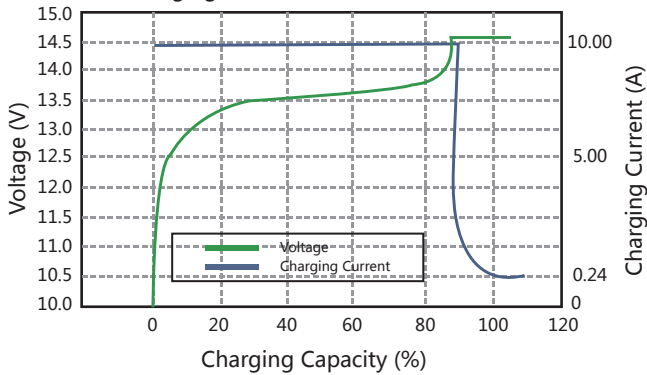
Different Rate Discharge Curve @25°C



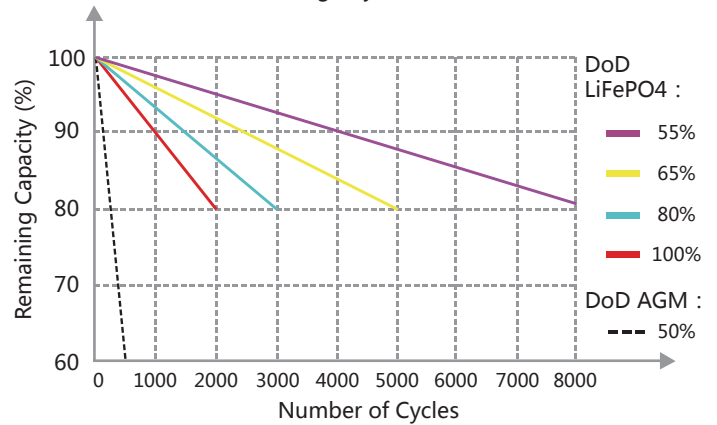
Different Temperature Discharge Curve @0.5°C



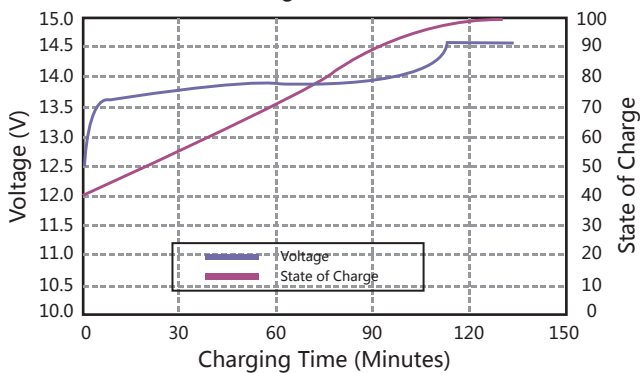
Charging Characteristics @0.5C 25°C



Different DoD Discharge Cycle Life @1C



State of Charge Curve @0.5C 25°C



Different Temperature Self Discharge Curve

